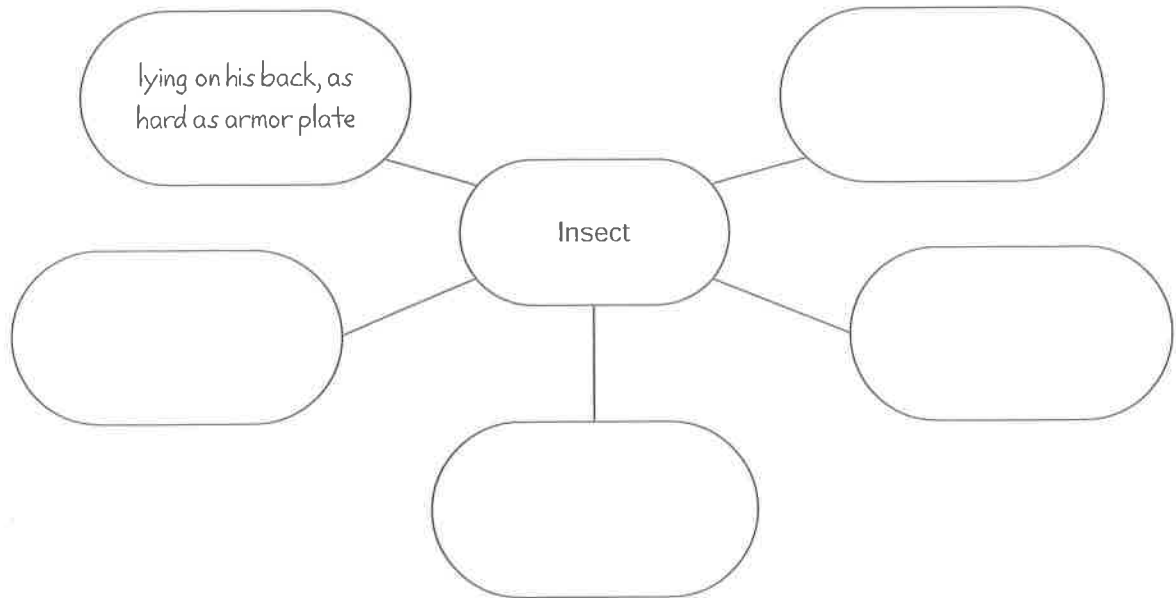
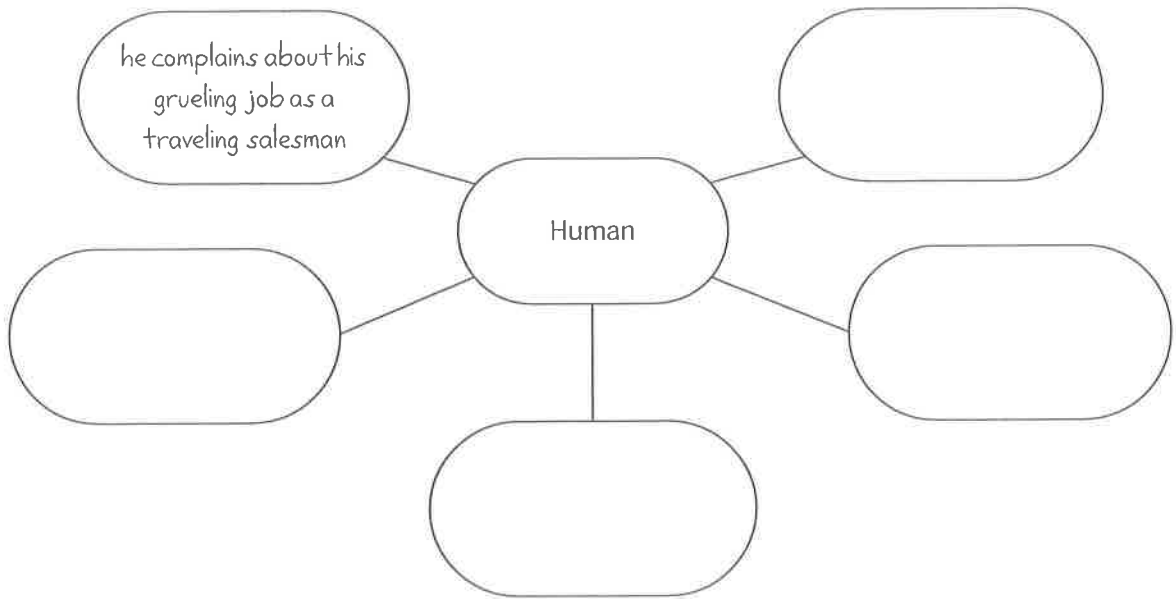


Active Reading

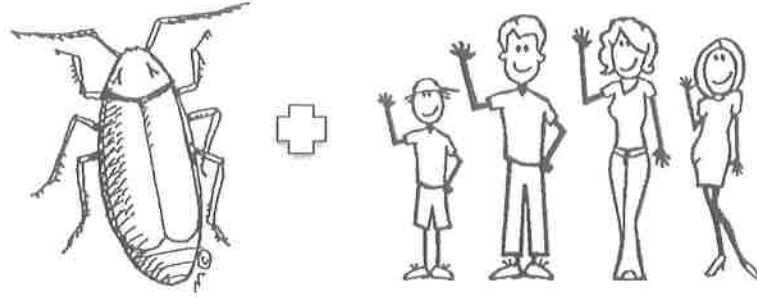
The Metamorphosis Chapter Two

In the first chapter of *The Metamorphosis*, Kafka portrays Gregor as a dual being, both human and insect. For example, Gregor must figure out how his new body functions and learn how to use his legs and turn over. At the same time, he has the thoughts and feelings of a human being. As you read, use the word webs below to note words, phrases, and other information about Gregor's two "selves."



Copyright © by The McGraw-Hill Companies, Inc.

English 10 **Gregor's Family Relationships**



Directions: Describe Gregor's relationship with each of the following family members by filling out the chart below.

	DESCRIBE RELATIONSHIP THAT THIS PERSON SHARES WITH GREGOR INITIALLY	HOW DOES THIS PERSON CHANGE AFTER GREGOR'S TRANSFORMATION?	WHAT DOES THE CHANGE IN RELATIONSHIP WITH GREGOR TELL YOU ABOUT THIS PERSON? SIGNIFICANCE?
GREGOR'S FATHER			
GREGOR'S MOTHER			
GRETE (GREGOR'S SISTER)			

Symbolism in *The Metamorphosis*

As you no doubt can tell by now, *The Metamorphosis* is a highly symbolic text. Identify the following symbols to determine their meaning.

	WHERE DOES IT APPEAR IN THE TEXT?	WHAT DO YOU THINK IT MEANS?
"MONSTROUS VERMIN" OR BUG		
DOORS AND WINDOWS		
FOOD		
PICTURE OF THE GIRL IN GREGOR'S ROOM		
THE DAD'S NEW UNIFORM		
LIST ONE MORE:		

Gregor's Metamorphosis as Allegory

Name: _____

An allegory is a story in which characters, events, and settings symbolize abstract or moral concepts from the real world. Using **PASSAGES/QUOTES** from the text as needed, explain the following allegorical connections to *The Metamorphosis*. In other words, explain how/when these ideas are developed in the text.

M.Ch. 2 RO #3

QUESTION	QUOTE FROM BOOK	YOUR EXPLANATION	CONNECTION TO REAL WORLD: Think of a real-world situation that relates to this/these idea(s).
<p>The isolation of an individual results in a spiritual death that dehumanizes the lonely person. In what ways is Gregor "dehumanized" by his isolation? What about his life leads him to feel isolated?</p>			
<p>Meaningless work or drudgery alienates the individual from living an authentic, meaningful life. Find a quote that describes Gregor's "meaningless work." How does this make him feel?</p>			
<p>In the complicated modern world, the search for meaning is futile (or pointless).</p>			
<p>Dysfunctional family dynamics can destroy an individual. Find a quote that demonstrates the "dysfunction" of Gregor's family. How does this make him feel?</p>			